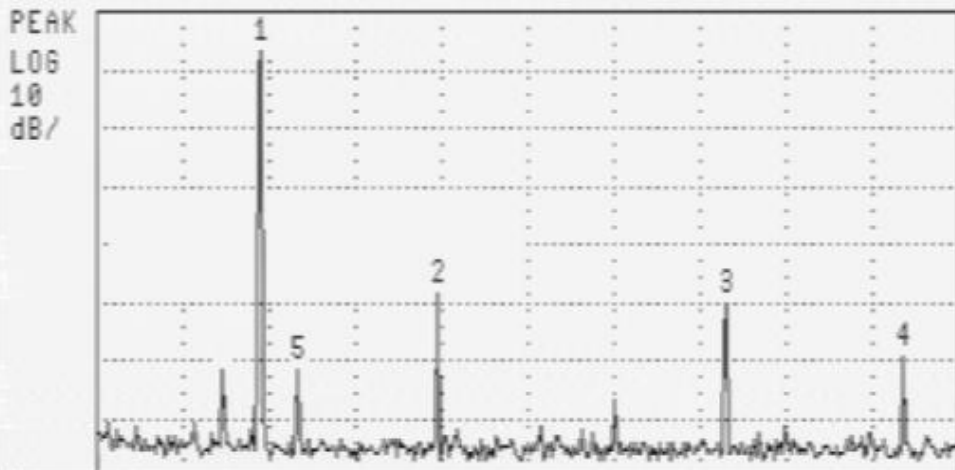


13:32:34 SEP 06, 2011

REF 5.0 dBm #AT 30 dB



PK TABLE ON OFF

PK SORT FRQ AMP

PK MODE <>DL NRM

DSP LINE ON OFF

Pk	Freq (MHz)	Amplitude	Pk	Freq (MHz)	Amplitude
1	12.71	-1.99 dBm	6	9.94	-55.63 dBm
2	25.33	-43.37 dBm	7		
3	45.96	-45.02 dBm	8		
4	58.58	-54.47 dBm	9		
5	15.32	-56.55 dBm	10		

PEAK EXCURSN

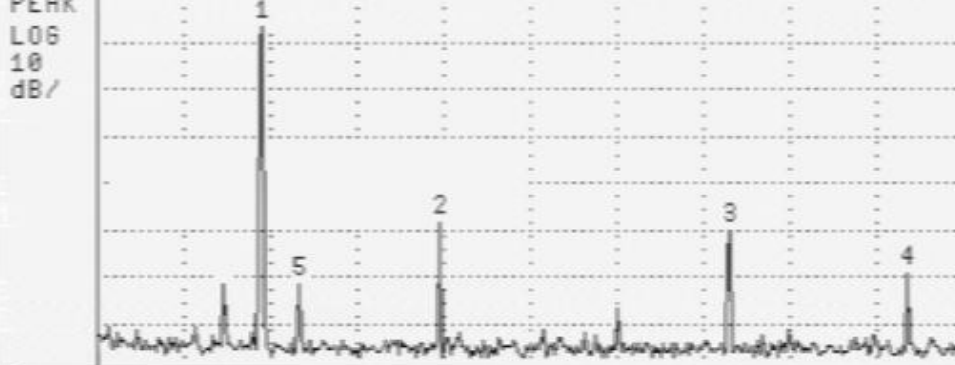
More 2 of 2

START 1.01 MHz #RES BW 30 kHz VBW 30 kHz STOP 62.58 MHz SWP 205 msec

1,8 MHz

13:32:34 SEP 06, 2011

REF 5.0 dBm #AT 30 dB



PK TABLE ON OFF

PK SORT FRQ AMP

PK MODE <>DL NRM

DSP LINE ON OFF

Pk	Freq (MHz)	Amplitude	Pk	Freq (MHz)	Amplitude
1	12.71	-1.99 dBm	6	9.94	-55.63 dBm
2	25.33	-43.37 dBm	7		
3	45.96	-45.02 dBm	8		
4	58.58	-54.47 dBm	9		
5	15.32	-56.55 dBm	10		

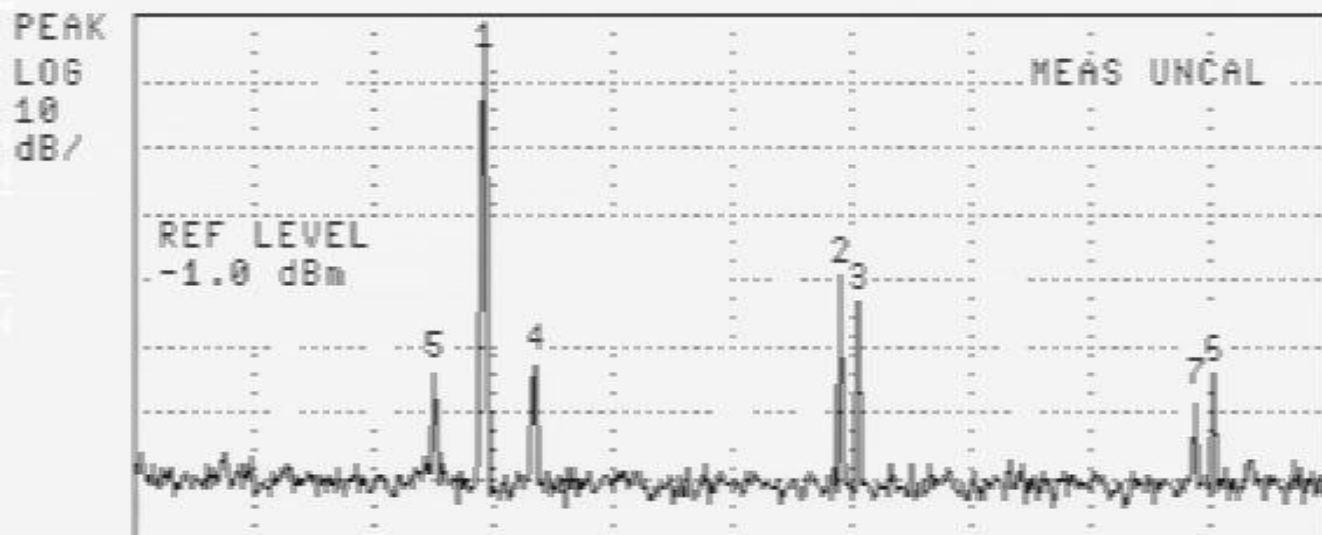
PEAK EXCURSN

More 2 of 2

START 1.01 MHz #RES BW 30 kHz VBW 30 kHz STOP 62.58 MHz SWP 205 msec

3,5 MHz

REF -1.0 dBm #AT 30 dB

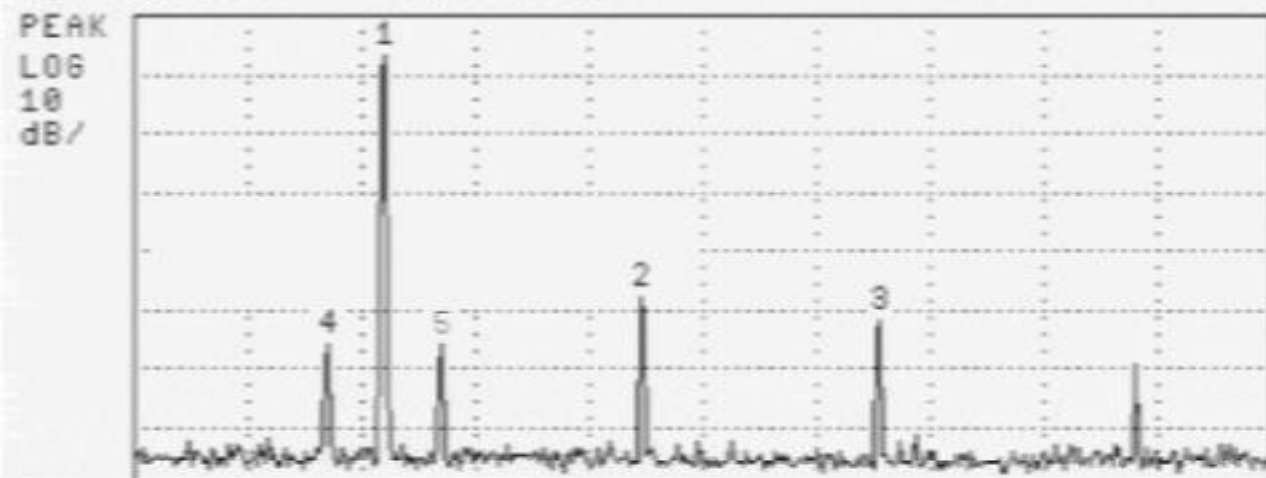


Pk	Freq (MHz)	Amplitude	Pk	Freq (MHz)	Amplitude
1	19.31	-2.71 dBm	6	58.70	-55.54 dBm
2	38.52	-40.43 dBm	7	57.73	-58.65 dBm
3	39.49	-44.55 dBm	8		
4	22.05	-53.67 dBm	9		
5	16.56	-54.63 dBm	10		

START 420 kHz STOP 65.00 MHz 10 MHz

13:18:11 SEP 06, 2011

REF 5.0 dBm #AT 30 dB



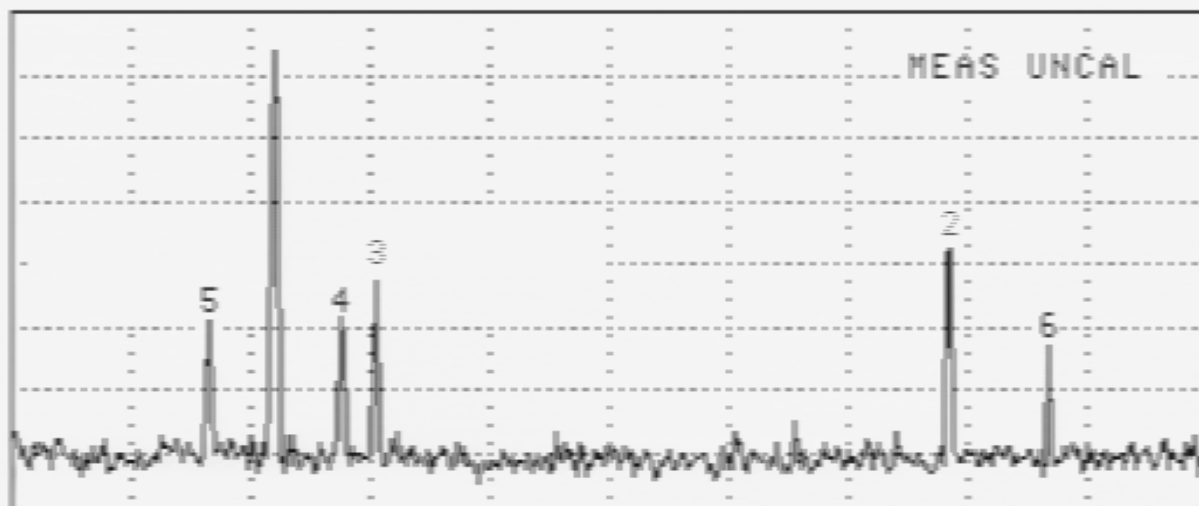
Pk	Freq (MHz)	Amplitude	Pk	Freq (MHz)	Amplitude
1	23.21	-1.94 dBm	6	58.53	-55.11 dBm
2	35.25	-42.80 dBm	7		
3	46.49	-46.89 dBm	8		
4	20.54	-51.06 dBm	9		
5	25.89	-51.11 dBm	10		

START 11.44 MHz STOP 64.95 MHz  
#RES BW 30 kHz VBM 30 kHz SWP 178 msec

14 MHz

REF -1.0 dBm #AT 30 dB

PEAK  
LOG  
10  
dB/



Pk	Freq (MHz)	Amplitude	Pk	Freq (MHz)	Amplitude
1	27.15	-3.01 dBm	6	58.57	-54.48 dBm
2	54.57	-38.49 dBm	7		
3	31.28	-43.33 dBm	8		
4	29.82	-50.54 dBm	9		
5	24.49	-50.97 dBm	10		

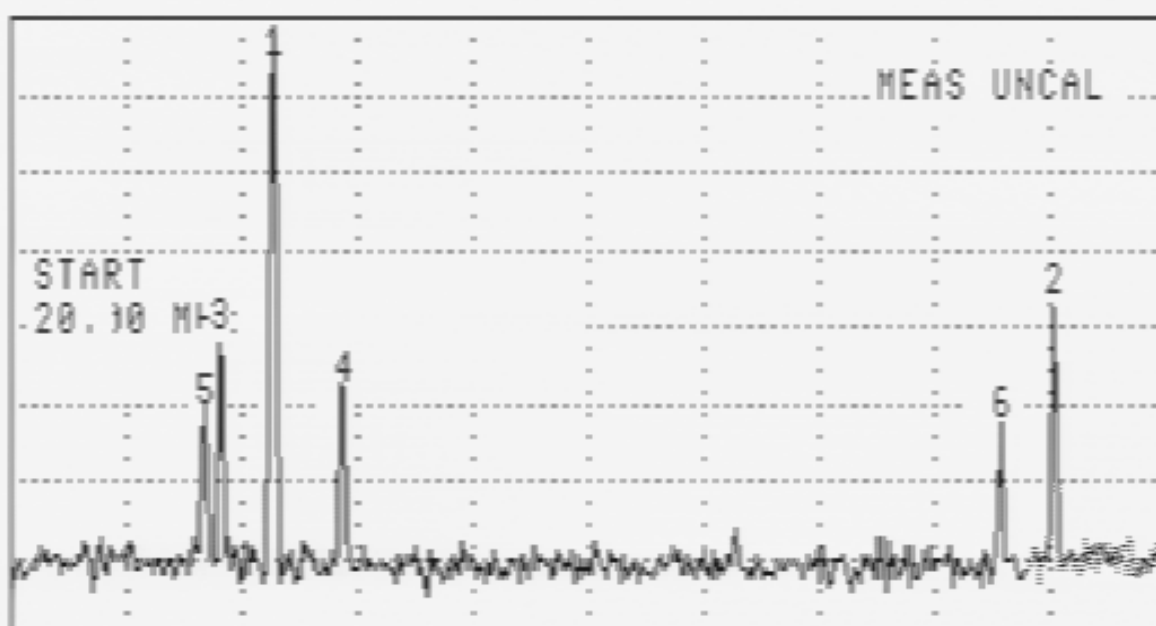
START 16.48 MHz

STOP 65.00 MHz 18 MHz

1/2

REF -1.0 dBm #AT 30 dB

PEAK  
LOG  
10  
dB/

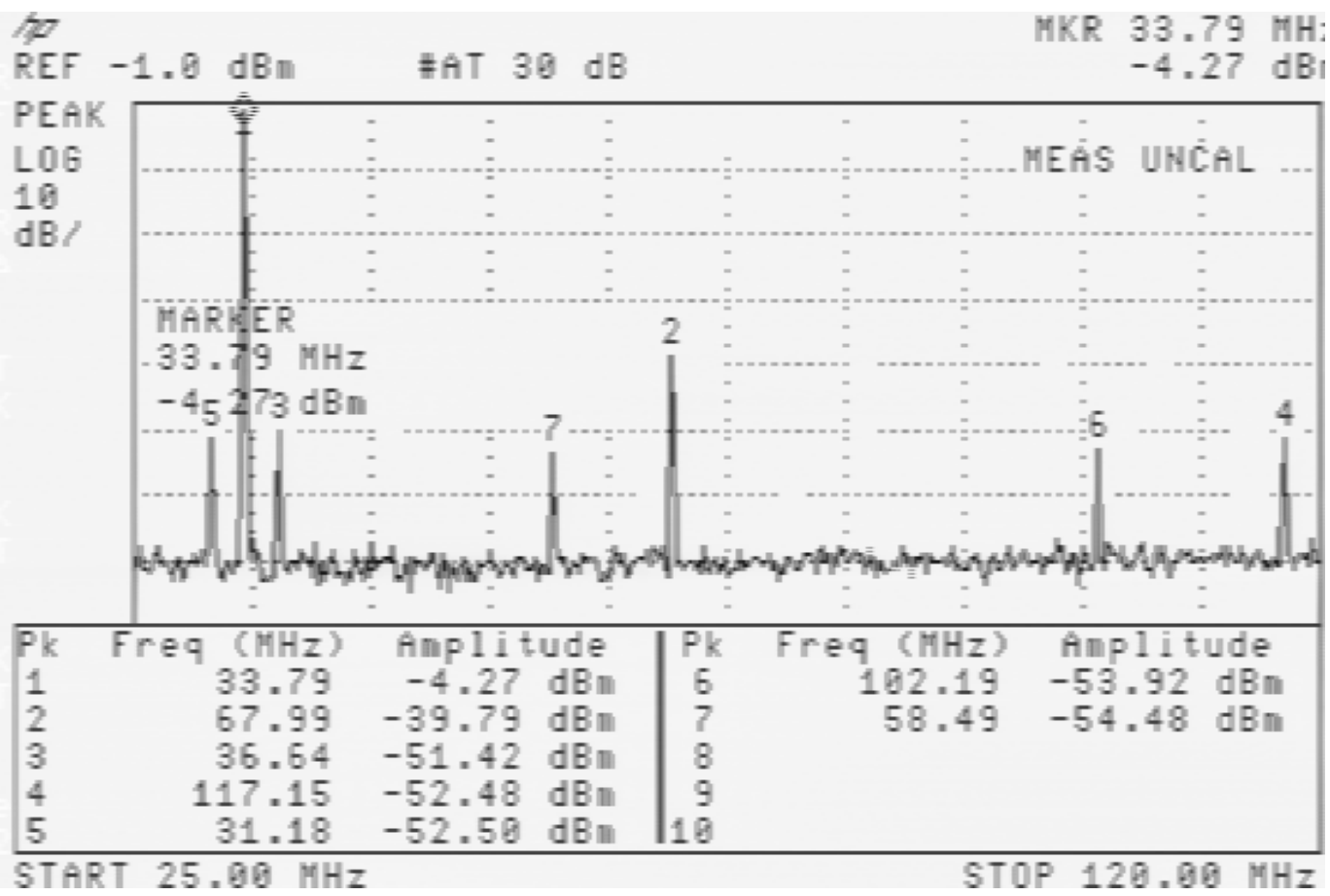


Pk	Freq (MHz)	Amplitude	Pk	Freq (MHz)	Amplitude
1	30.24	-3.25 dBm	6	58.59	-54.53 dBm
2	60.61	-38.56 dBm	7		
3	28.10	-43.09 dBm	8		
4	32.94	-49.86 dBm	9		
5	27.54	-53.03 dBm	10		

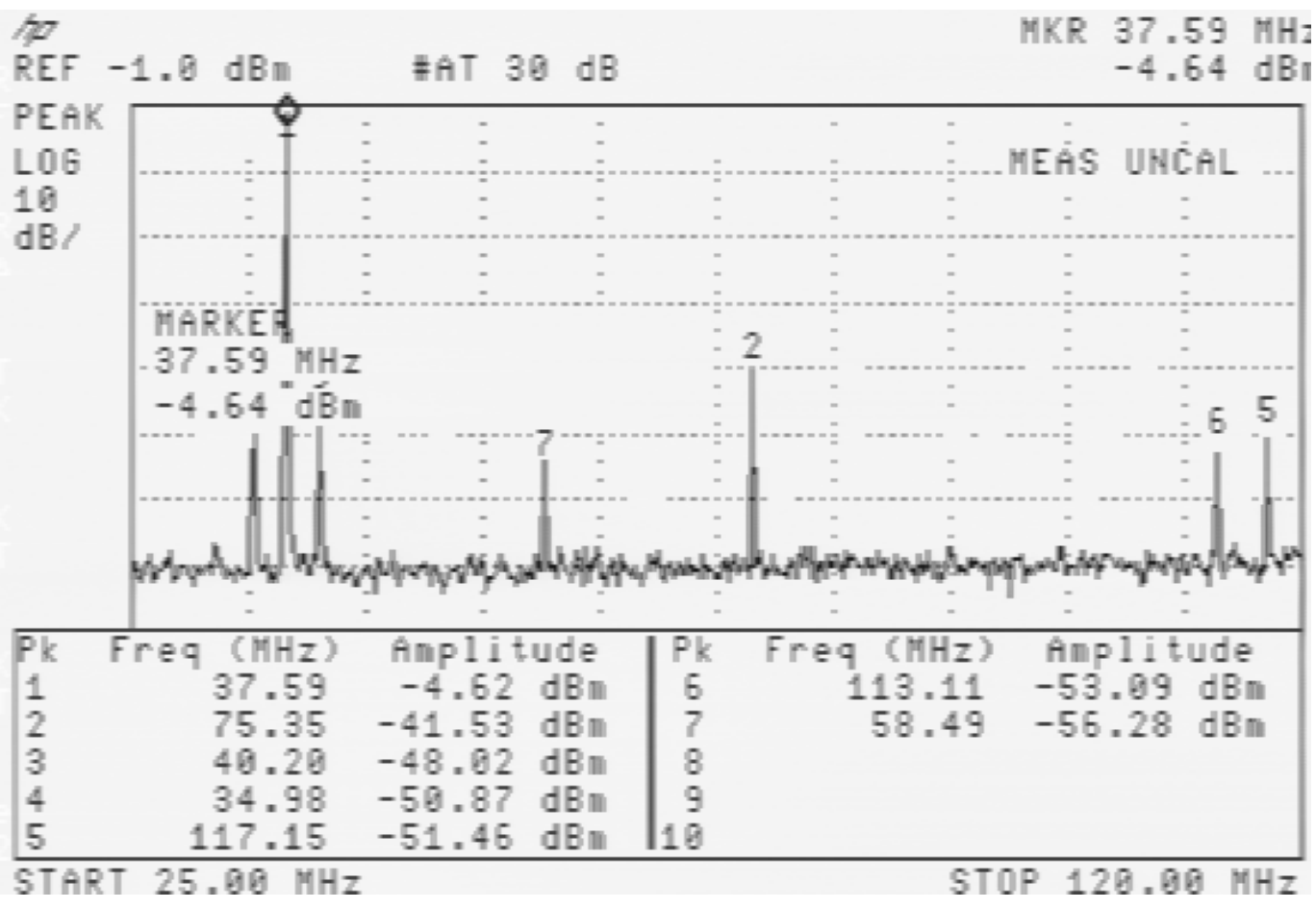
START 20.00 MHz

STOP 65.00 MHz

21 MHz



24 MHz



28 MHz