

INSTRUCTIONS SHEET FOR 32MCD & 32MCD/WB

(1.) ASSEMBLE SPREADERS:

TIGHTEN SCREW CLAMPS SECURE

LARGE END

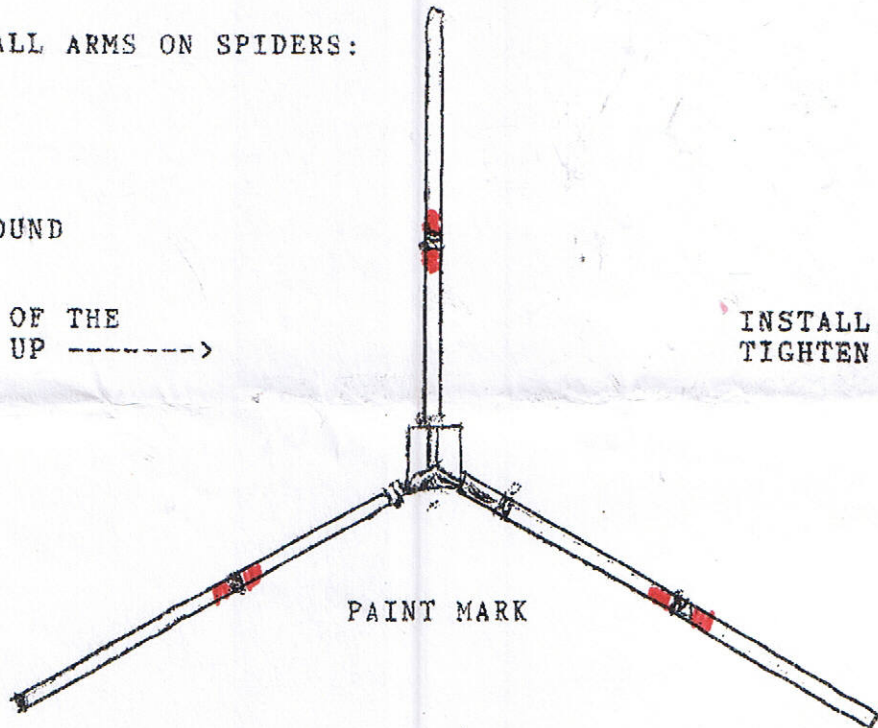


(2.) INSTALL ARMS ON SPIDERS:

LAY ON GROUND

THIS SIDE OF THE
SPIDER IS UP ----->

INSTALL SCREW CLAMP
TIGHTEN SECURELY.



***** NOTE: WHEN WORKING WITH FIBERGLASS PLEASE WEAR GLOVES.

24.752'

(3.) INSTALL WIRE HOLDERS ON ARMS, SEE CHART BELOW FOR APPROXIMATE WIRE HOLDER POSITIONS.

APPROXIMATE WIRE HOLDER POSITIONS: MEASURE FROM INSIDE OF SPIDER.

BAND	REFLECTOR	DRIVEN ELEMENT
20 MTR	13'10"	13'7"
17 MTR	11'	10'9"
15 MTR	9'4"	9'
12 MTR	8'	7'10"
10 MTR	6'10"	6'7"

Red = Reflected
GRN = DRIVER



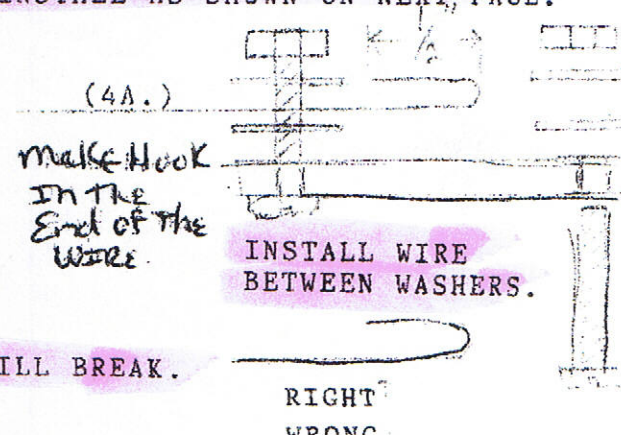
DO NOT TIGHTEN TIGHT ONLY SNUG.
YOU HAVE TO MAKE MORE ADJUSTMENTS.
REMEMBER: THESE ARE APPROXIMATE WIRE HOLDER POSITIONS. MORE ADJUSTMENTS WILL BE NEEDED WHEN WIRES ARE INSTALLED.

***** NOTE: WHEN WORKING WITH WIRE WEAR EYE PROTECTION.

(4.) MEASURE, CUT, AND INSTALL ONE WIRE AT A TIME. START WITH 20MTR. REFLECTOR SEE FIGURE 4A FOR INSULATOR ASSEMBLY AND INSTALLATION. ONCE WIRE IS INSTALLED, ADJUST WIRE HOLDERS SO THAT ELEMENT IS DISTRIBUTED EVENLY OVER THE SPREADERS. WIRE SHOULD BE SNUG BUT NOT TO TIGHT. THERE SHOULD BE A SLIGHT BOW TO THE SPREADERS. (DO NOT OVER TIGHTEN.)

CUT WIRES TO FOLLOWING LENGHTS, INSTALL AS SHOWN ON NEXT PAGE.

20 MTR	72ft. 8 in.
17 MTR	57 ft. 6 in.
15 MTR	49 ft. 2 in.
12 MTR	42 ft.
10 MTR	36 ft. 4 in.

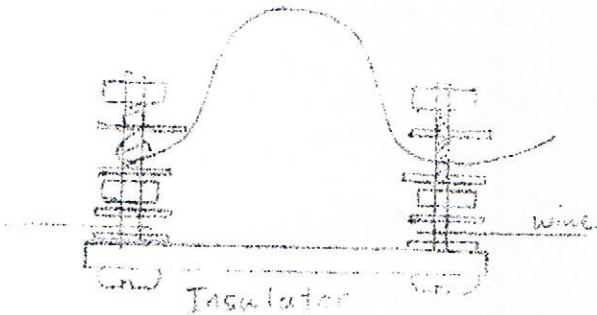


DO NOT CROSS WIRE OVER ITSELF OR IT WILL BREAK.

(4B.) ADJUSTABLE REFLECTOR STUB:

CUT 8" OF WIRE. MAKE LOOP ON ONE END.

LIKE THIS

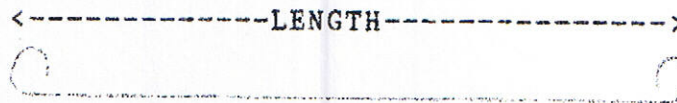


INSTALL ON INSULATOR AS SHOWN.

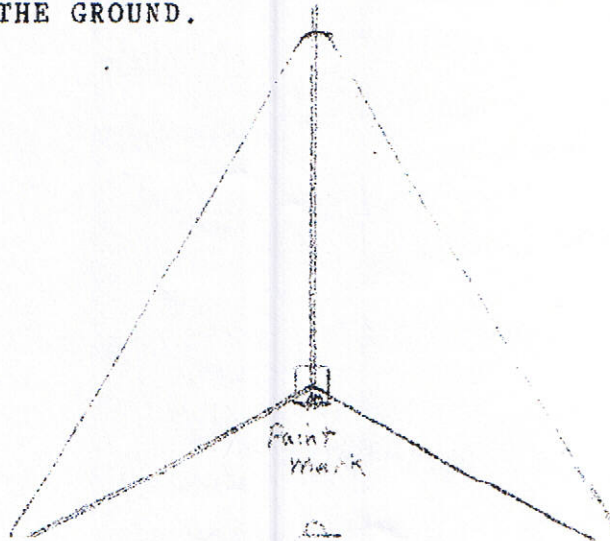
INSTALL BETWEEN WASHERS. LEAVE NUTS FINGER TIGHT. ADJUST FOR BEST FRONT TO BACK RATIO OR BEST GAIN. THEN TIGHTEN SECURELY.

PRESET REFLECTOR MAKE JUMPERS THE FOLLOWING LENGTHS AND INSTALL ON INULATORS AS IN STEP ABOVE.

20,17,15 MTR	6"
12 MTR	5"
10 MTR	4"



(4C.) MAKE SURE THE INSULATORS ARE LOCATED UNDER THE PAINT MARK. AFTER FINAL ASSEMBLY, PAINT MARKS WILL BE AT THE BOTTOM, OR TOWARDS THE GROUND.



(5.) DRIVEN ELEMENT:

REPEAT STEP 4. IF YOU ARE INSTALLING THE TRANSFORMER START WITH 15 MTR. WIRE FIRST. ADJUST WIRE HOLDERS AFTER ALL WIRES HAVE BEEN INSTALLED.

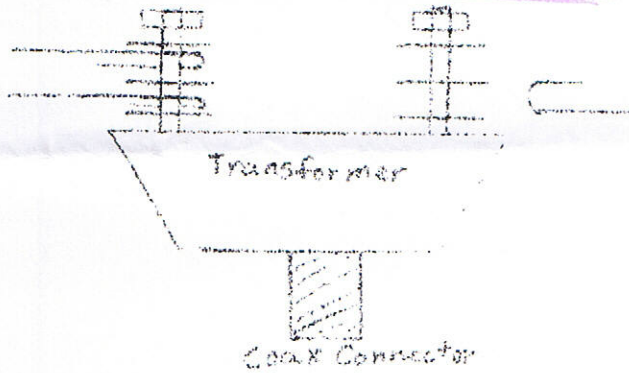
CUT WIRES TO THE FOLLOWING LENGTHS.

15 MTR.	48 ft. 2 in.
20 MTR.	70 ft. 8 in.
10 MTR.	35 ft. 4 in.
17 MTR.	55 ft. 10 in.
12 MTR.	40 ft. 11 in.

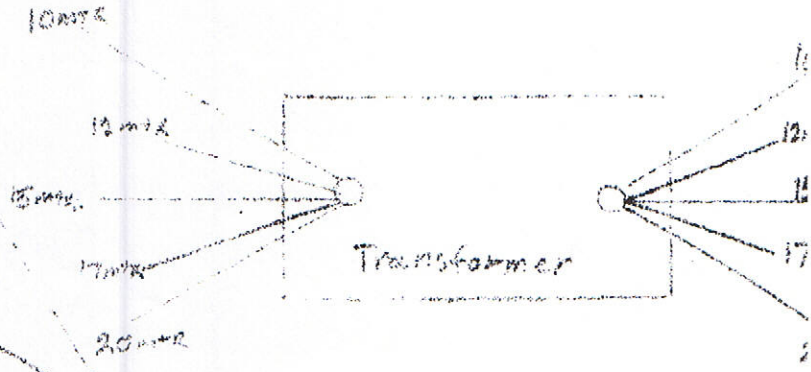
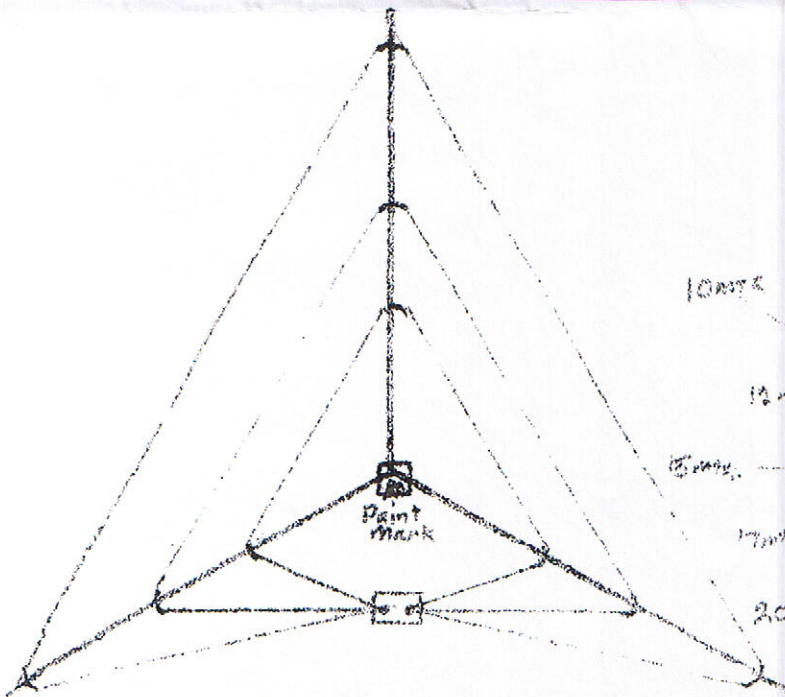
BEND WIRE AS SHOWN:



INSTALL WIRE BETWEEN WASHERS

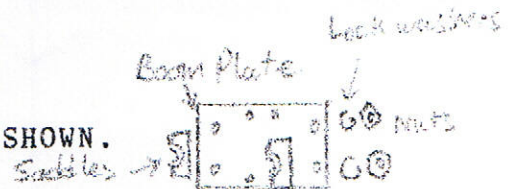


DO NOT BEND WIRE OVER ITSELF.



(6.) BOOM ASSEMBLY:

ASSEMBLE BOOM AND BOOM PLATE AS SHOWN.

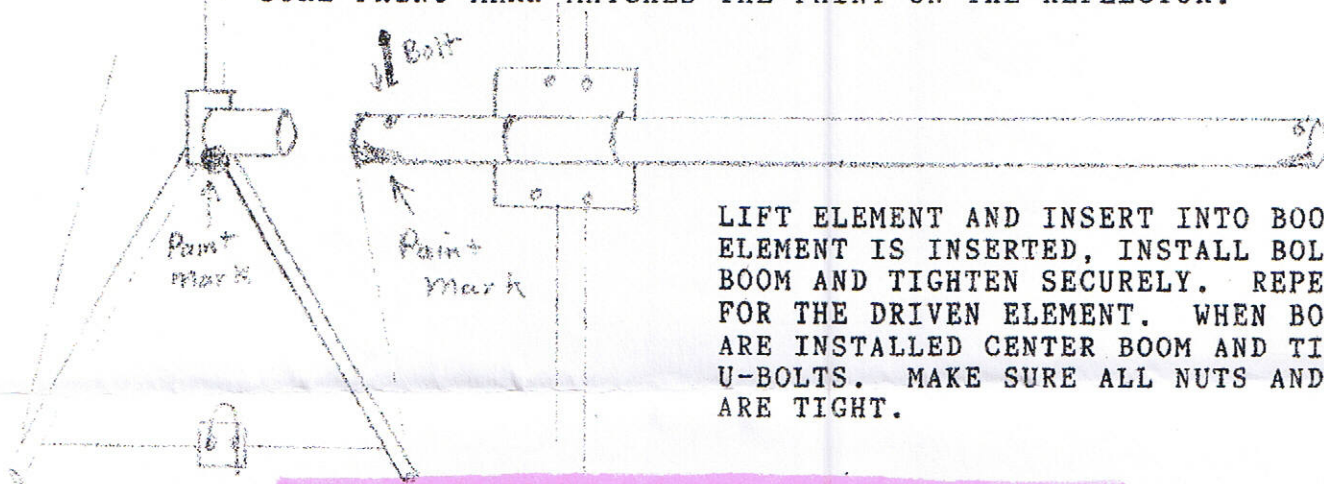


LEAVE NUTS FINGER TIGHT.



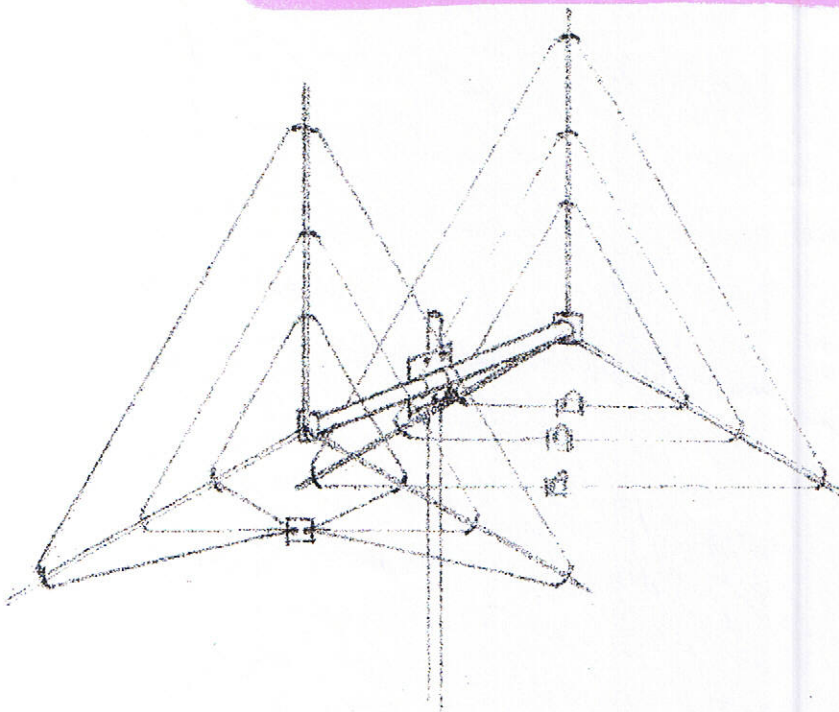
(7.) FINAL ASSEMBLY: **!!!!!!DANGER!!!!!! DO NOT INSTALL NEAR POWER LINES**

INSTALL THE BOOM ASSEMBLY ON A MAST OR SOME SUPPORT (TOWER, STEP LADDER, ETC.) PAINT MARKS SHOULD BE TOWARDS THE GROUND. SLIDE BOOM TO ONE SIDE AS SHOWN. START WITH REFLECTOR, MAKE SURE PAINT MARK MATCHES THE PAINT ON THE REFLECTOR.



LIFT ELEMENT AND INSERT INTO BOOM. ONCE ELEMENT IS INSERTED, INSTALL BOLT THROUGH BOOM AND TIGHTEN SECURELY. REPEAT THIS FOR THE DRIVEN ELEMENT. WHEN BOTH SIDES ARE INSTALLED CENTER BOOM AND TIGHTEN THE U-BOLTS. MAKE SURE ALL NUTS AND BOLTS ARE TIGHT.

(8.) **THE FINAL ASSEMBLY SHOULD LOOK LIKE THIS.**



IMPORTANT:

TUNERS, SWITCH BOXES, FILTERS, LINEAR AMPLIFIERS, WILL EFFECT SWR READINGS. YOU SHOULD HAVE NOTHING BUT COAX BETWEEN THE SWR/WATT METER AND THE ANTENNA. DO NOT USE TUNER. IF LINEAR AMP. IS USED, LOCATE BETWEEN RIG AND SWR METER. IF ANYTHING OTHER THAN THE ABOVE CIRCUIT IS USED, YOU WILL BE RESPONSIBLE FOR ANY SWR PROBLEMS. LIGHTNING BOLT ANTENNAS IS NOT RESPONSIBLE FOR ACCIDENTS, TVI, RFI, APPEARANCE OR INSTALLATION COMPLAINTS. !!!!!!!!DANGER!!!!!!!!!!!!
DO NOT INSTALL NEAR POWER LINES.

IF YOU HAVE ANY QUESTIONS CALL ⁽⁷²⁴⁾~~(412)~~ 530-7396.

MIKE'S AUTO ELECTRIC
LIGHTNING BOLT ANTENNAS
RD # 2 RT 19
VOLANT, PA. 16156